

Camp Grayling Chargeable Quarters/Lodging

Camp Grayling offers numerous on-camp chargeable quarter options throughout the year. All lodging includes linens, Wi-Fi, cable tv, microwave, coffee pot and refrigerator. Amenities include daily housekeeping for hotel-type rooms, coffee and condiment pack, and personal care items.

- No pets allowed.
- No smoking in buildings.
- No fires in Cantonment area

RESERVATIONS:

RESERVATIONS FOR hotel and suite lodging can be made up to a year in advance for official use and up to 90 days for non-official use.

RESERVATIONS FOR COTTAGES are 6-nights (Thurs – Wed or Fri – Thurs). Reservations for Cottages can be made up to 180 days in advance for official use and up to 90 days for non-official use.

Cottage stays of 2 nights or more can be made only when within 30 days of desired arrival date.

Per DoDI 1015.11, Priority one (Official) users are

- a. Active duty Military Department members and DoD civilian employees traveling on official orders.
- b. Reserve Component members who travel more than 50 miles from their residence to perform active duty or training in accordance with Section 12604 of Title 10, U.S.C.
- c. United States Coast Guard active duty members and Coast Guard civilians on TDY or PCS orders and their family members or family members traveling unaccompanied on PCS orders.
- d. DoD-sponsored foreign nationals on TDY.
- e. Uniformed services personnel family members on medical TDY orders.
- f. Active duty and retired Service members and their family members undergoing outpatient treatment at a DoD or Department of Veterans Affairs (VA) medical facility who are required by medical professionals to stay overnight in lodging.
- g. Guests of uniformed services personnel as determined by the installation commander and those on invitational travel authorizations.

PAYMENT POLICY:

For Hotel and Suite lodging, payment is due the business day prior to departure.

For Cottages, payment is due at time of check in.

No refunds.

No cash or checks.

We accept: Visa, MasterCard, Discover and AMEX

CANCELLATION POLICY:

Hotel and Suite reservations cancelled within 24 hours of scheduled arrival date and no shows will be charged a one night fee.

All Cottage cancellations are a \$100 fee.

CHECK IN/CHECK OUT:

Check in is between 1500 and 1630.

Hotel and Suite lodging check out is 1100.

Cottage check out is 1000.

Keys must be returned to the office or the drop box at the lower entrance of Building 4.

AFTER HOURS ARRIVAL:

For after hours or weekend arrivals, arrangements will be made utilizing key boxes in the mailroom/ATM room located in the lower level of Building 4.

OCCUPANCY POLICY:

Hotel and Suite rooms are designed/have amenities for single occupancy. Additional guests incur a charge of \$9.00 per night per guest. Children over 8 are considered additional guests. Lodging Office must be notified of all overnight guests.

DAMAGED/MISSING ITEMS/UNSATISFACTORY CONDITION:

Units with damaged/missing items or left in unsatisfactory condition may incur additional charges and lodging privileges may be lost.

LOST KEY:

Lost key for hotel and suite lodging is \$10. Lost key for Cottage is \$65.

PERSONAL PROPERTY:

Camp Grayling Lodging Program is not responsible for lost/missing personal items. If any items are found left behind, owner will be notified and items will be kept for 6 months.

RELOCATION/CANCELLATION:

All reservations may be cancelled/relocated based on the needs of the MING at any time by the TAG, ATAG, Garrison CDR or Deputy Garrison CDR.

HOTEL, SUITE and COTTAGE QUARTERS:

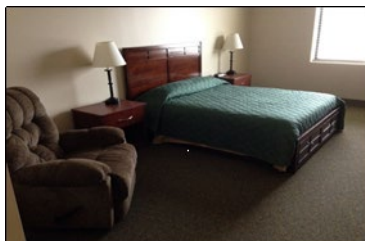
Hotel Quarters

Private queen bedroom and bathroom with shared laundry facility.

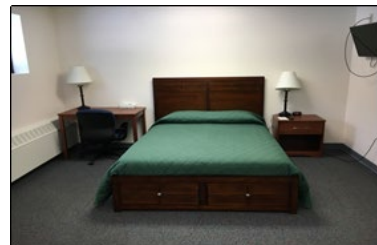
Single Occupancy Rate: \$65/night

Additional Guest: \$9/night

Building 120 – 10 rooms



Building 532 – 10 rooms
(also has shared common area)



Suite Quarters

Private queen rooms and baths in a home style setting with full kitchen, living room, dining room and furnished deck with grill.

Single Occupancy Rate: \$75/night

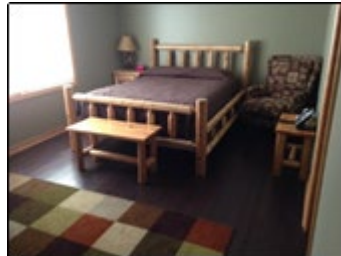
Additional Guest: \$9/night

Building 413* - Distinguished Visitor Quarters - 5 bedroom house (also includes washer & dryer)

*For use by Senior Officers and Senior Enlisted

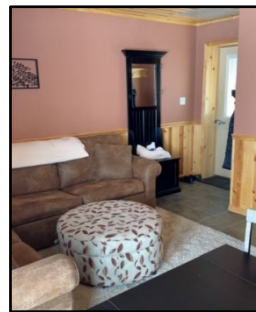


Building 401 – 2 bedroom house (also includes washer & dryer)



Building 49 North – 1 bedroom apartment

Building 49 South – 1 bedroom apartment

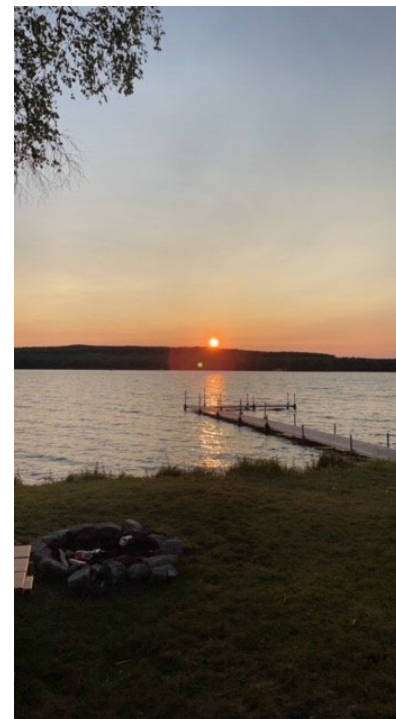
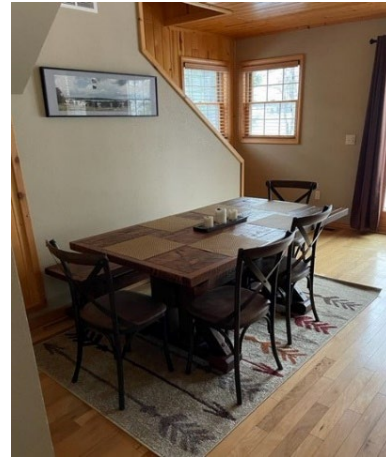


Cottages

Two story, 3 bedroom, two bathroom fully furnished homes on Lake Margrethe. Sleeps 8 people. Upper level: Room with 1 king bed, Room with 2 queen beds, one bathroom with tub. Main level: Room with 1 queen bed, one bathroom with walk-in shower. Furnished deck with grill.

Rate: \$150/night

Cottage 77, 78, 79, 80.



OFFICE INFORMATION:

Camp Grayling Lodging Office is located in the lower level of Building 4/Headquarters Building.

Office Hours: Monday – Friday, 0800-1630

989-344-6213

cgctqs@gmail.com